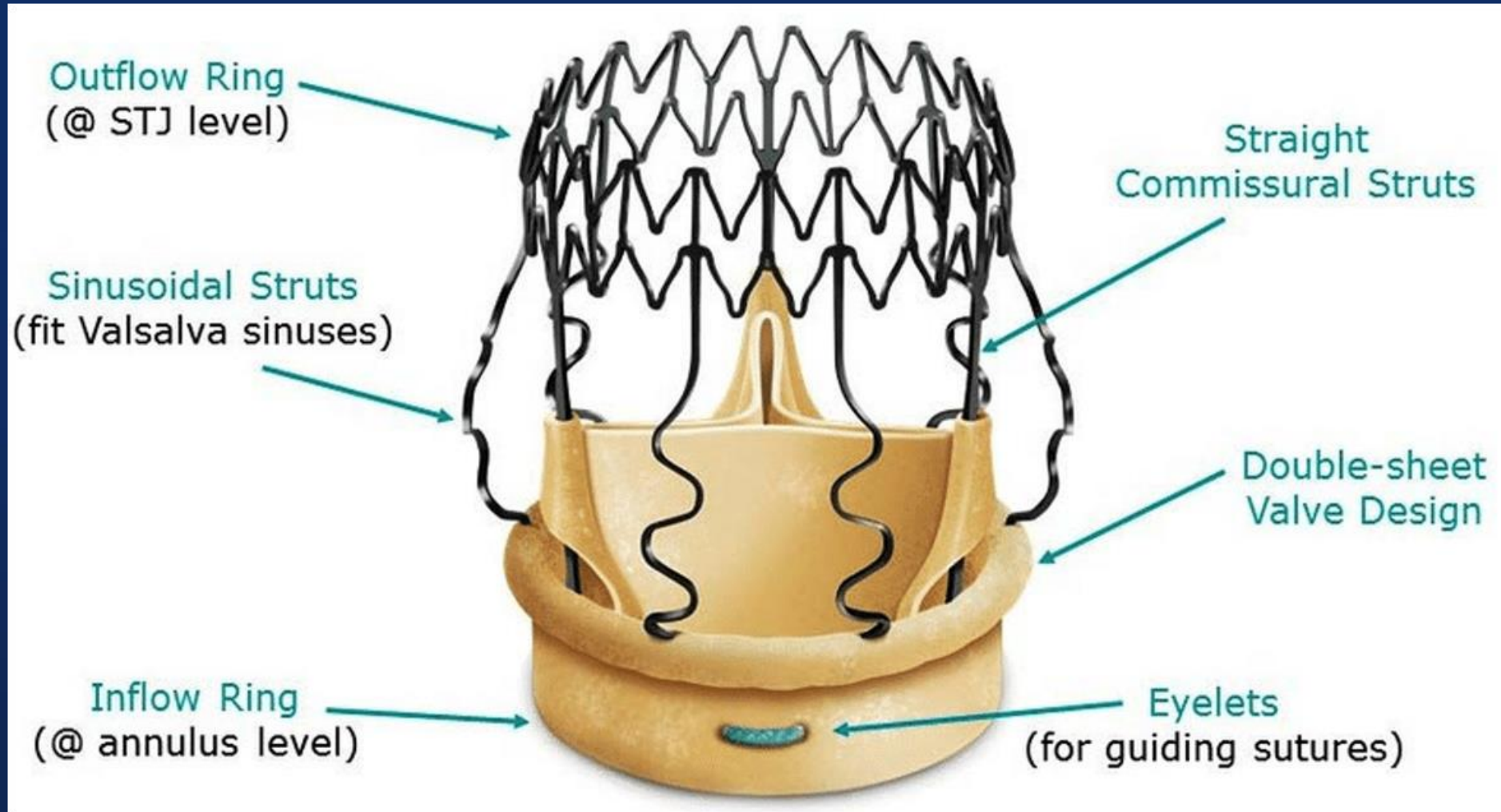
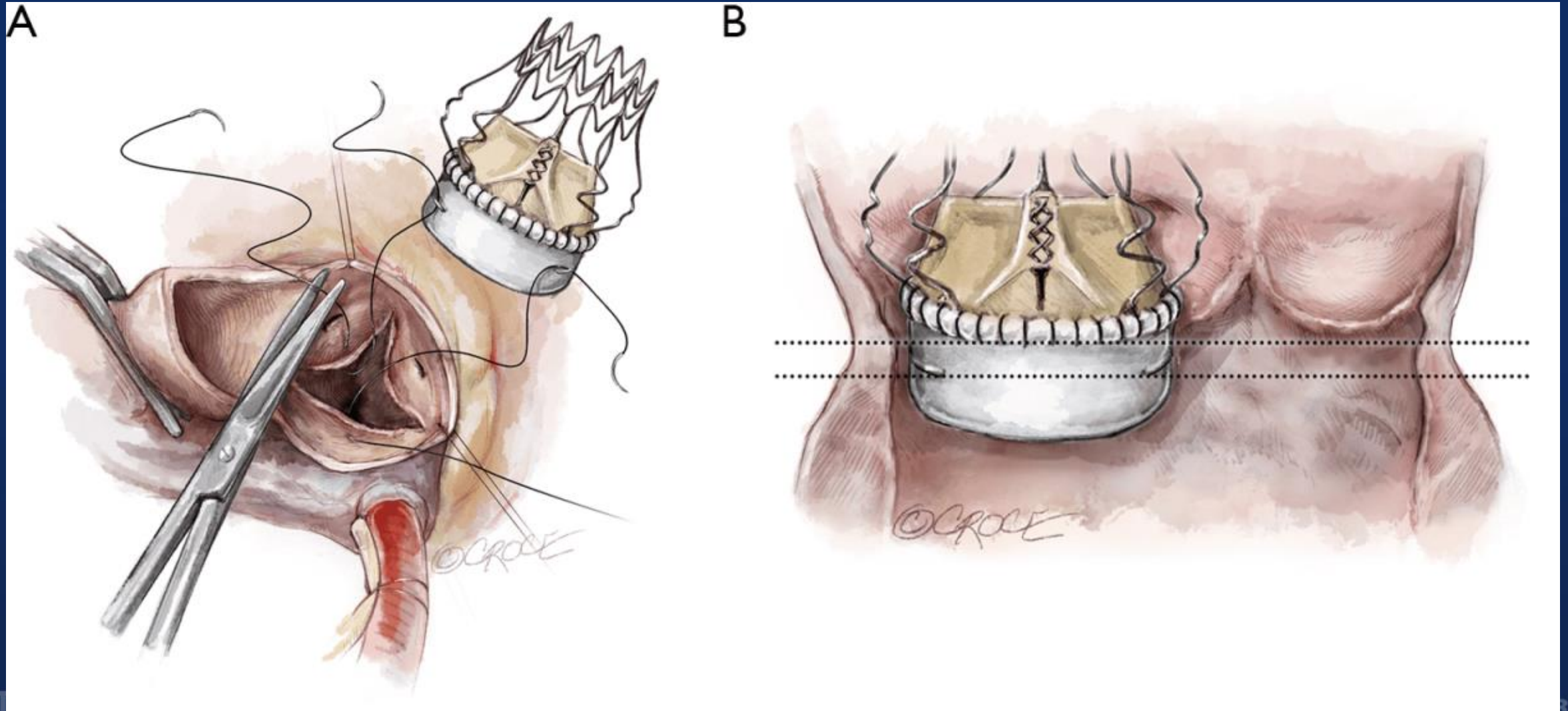


Perceval Valve Design



Placement of guiding sutures in the valve sinuses



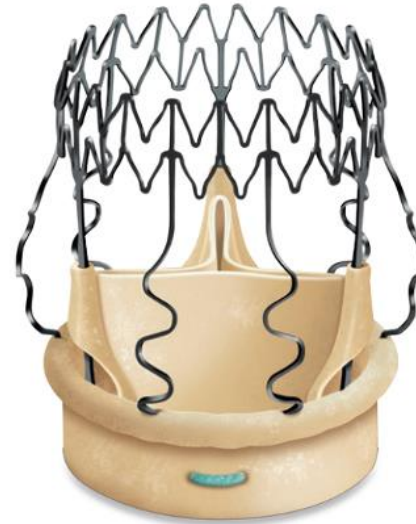
Perceval Valve Size



Extra Large
25-27 (mm)



Large
23-25 (mm)

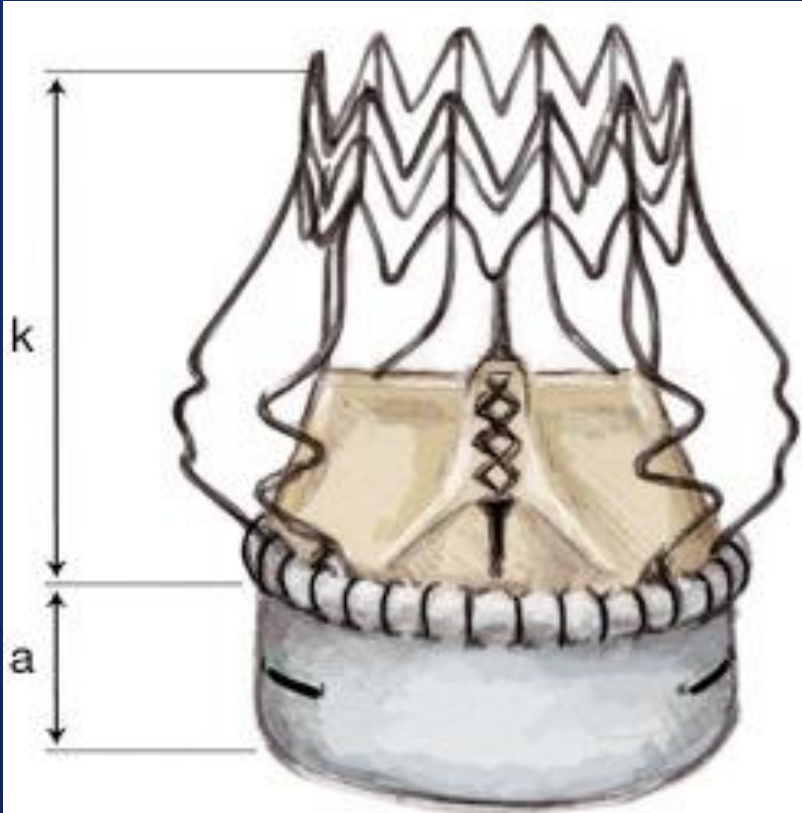


Medium
21-23 (mm)



Small
19-21 (mm)

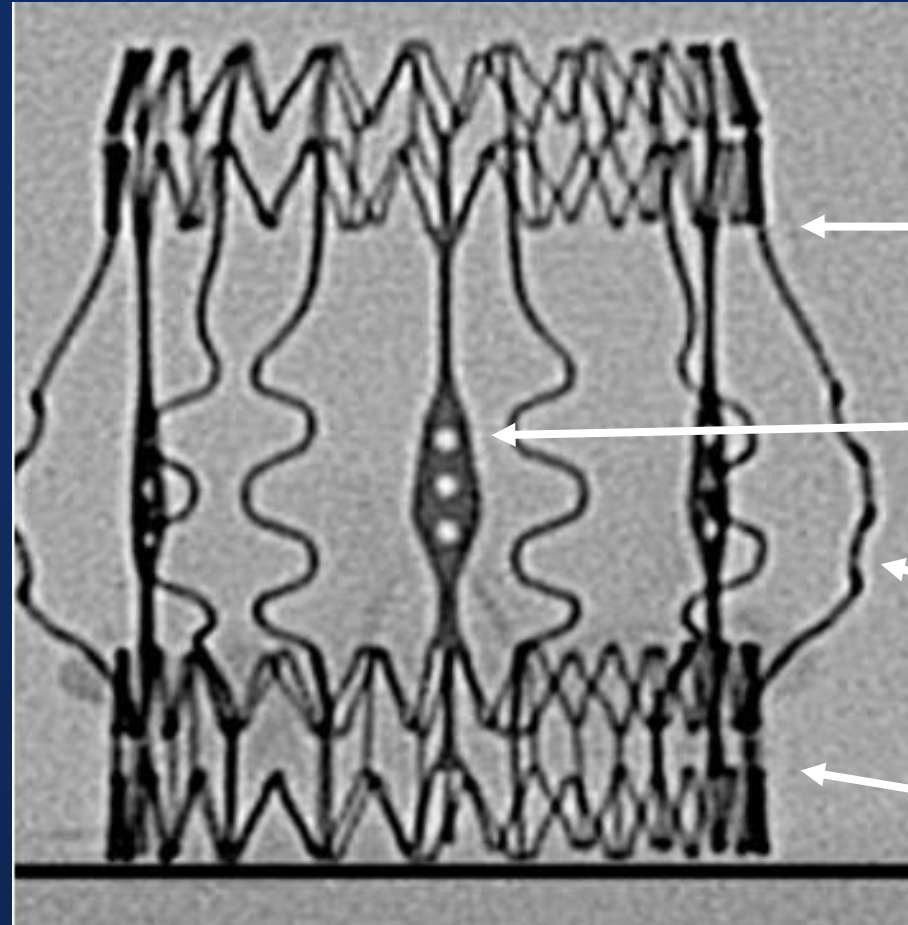
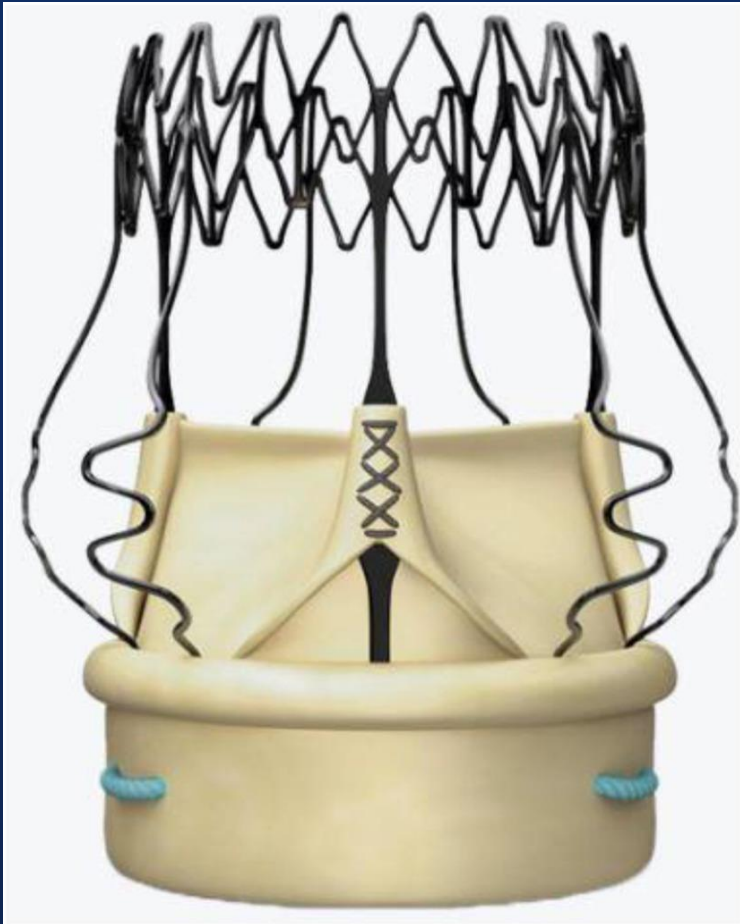
Perceval Valve Height



Valve dimensions

Size	S	M	L	XL
a (mm)	6.0	6.5	7.0	8.0
k (mm)	25	26.5	28.5	29.5

Perceval Valve Design



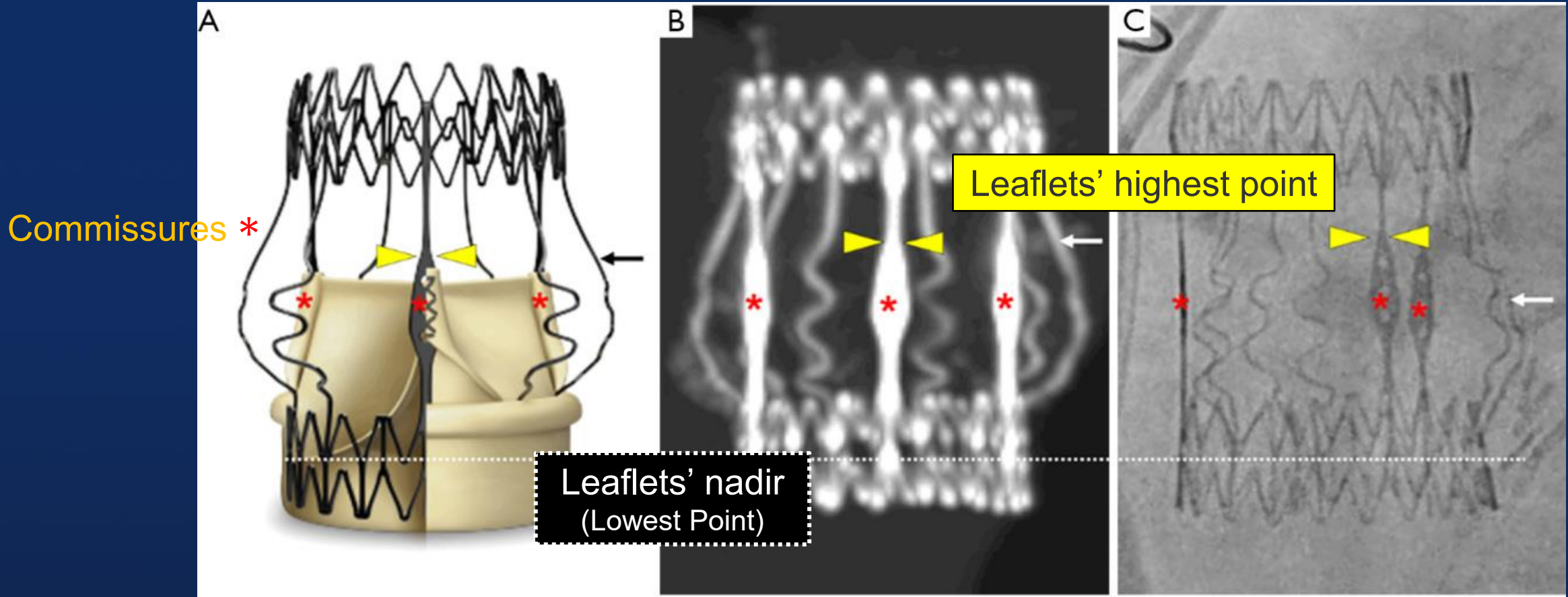
← Outflow Ring

← Column

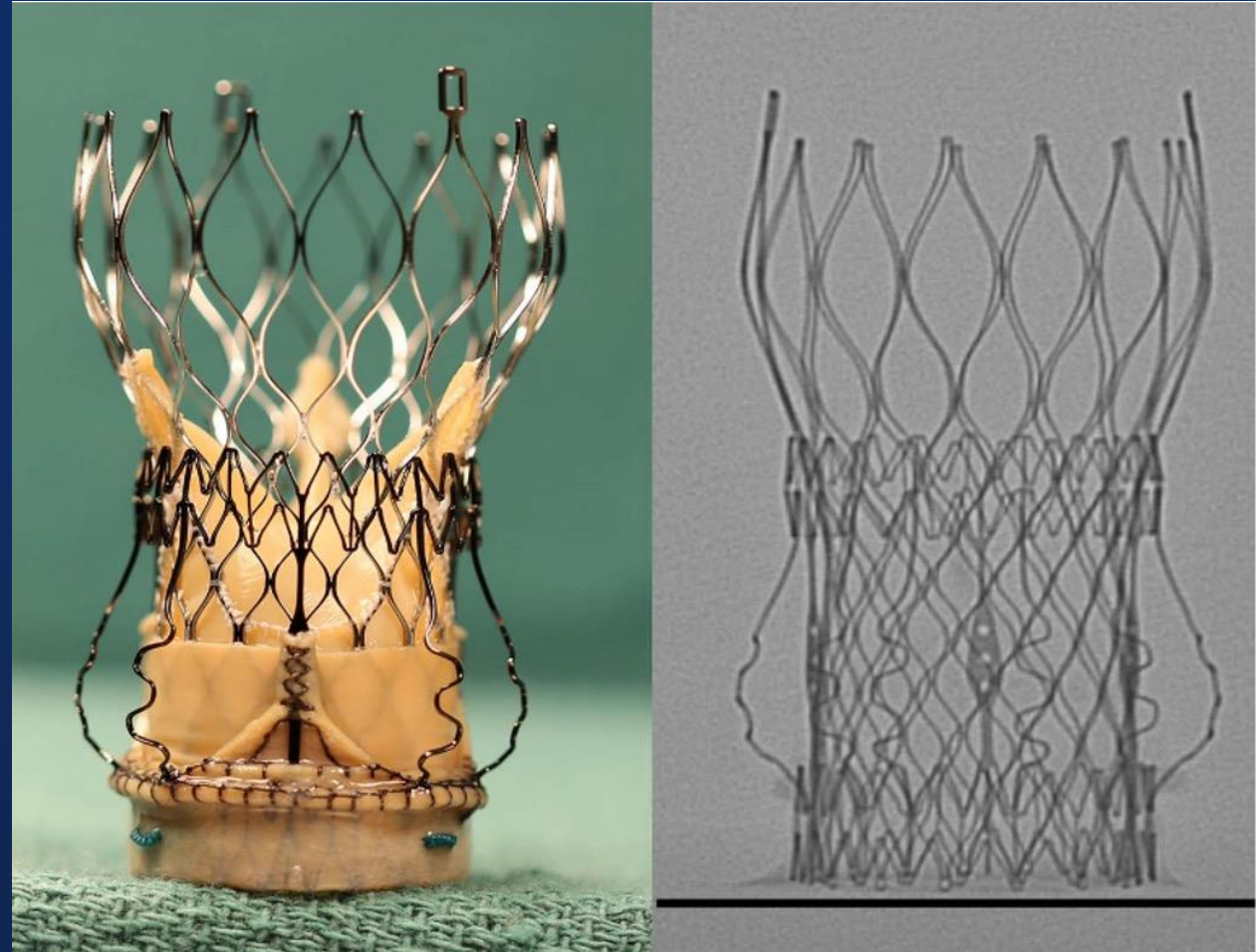
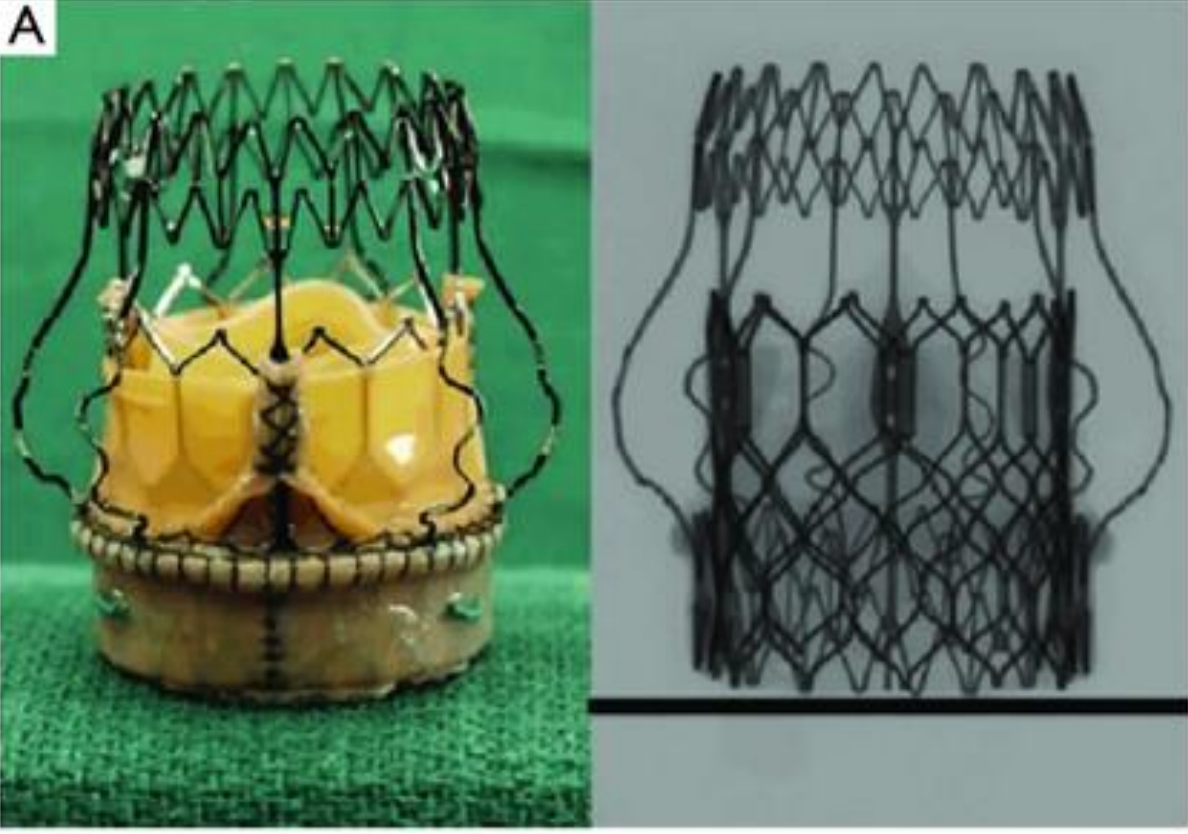
← Sinusoidal Strut

← Inflow Ring

Perceval Valve Leaflet

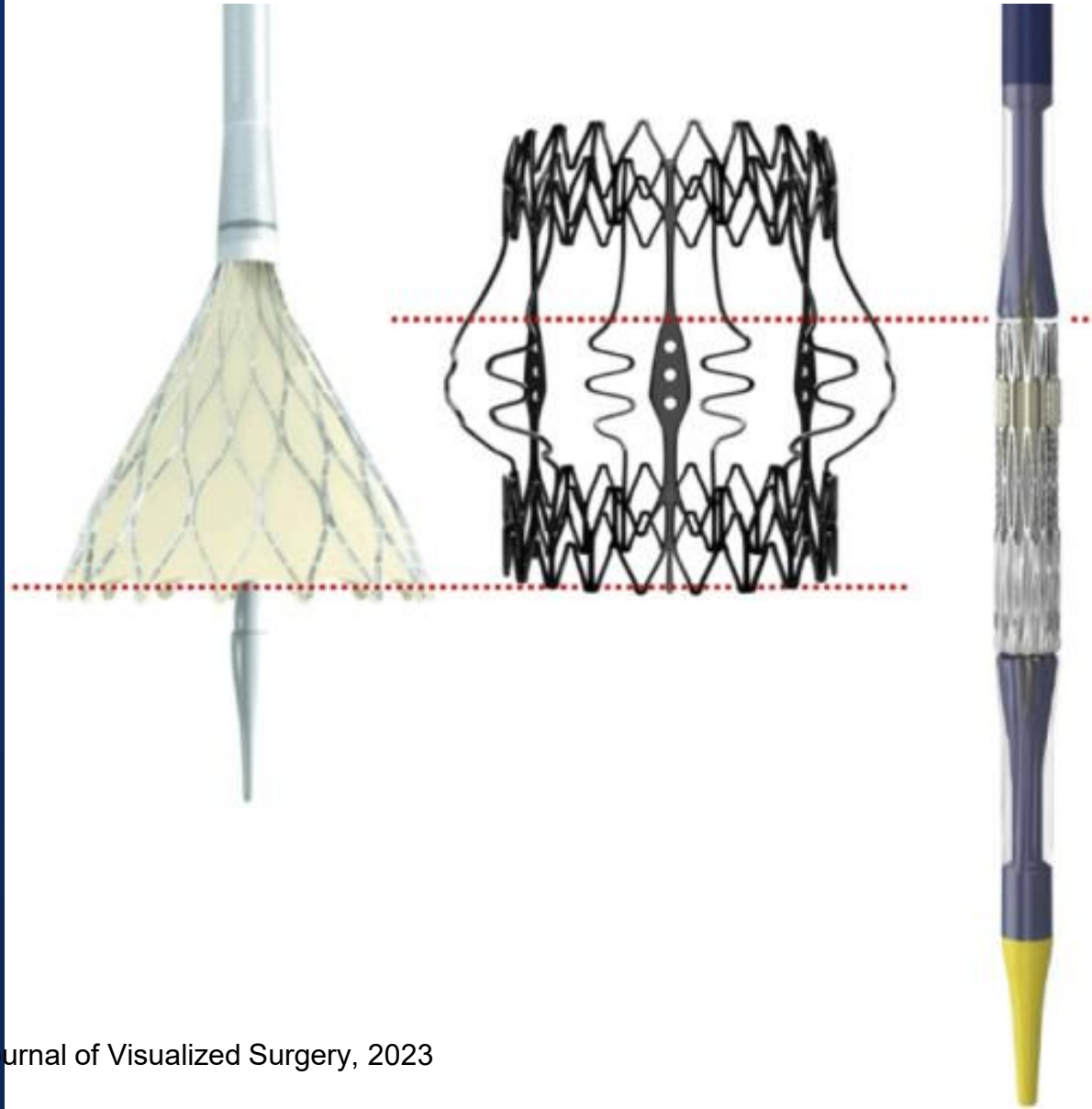


Target Implant Depth



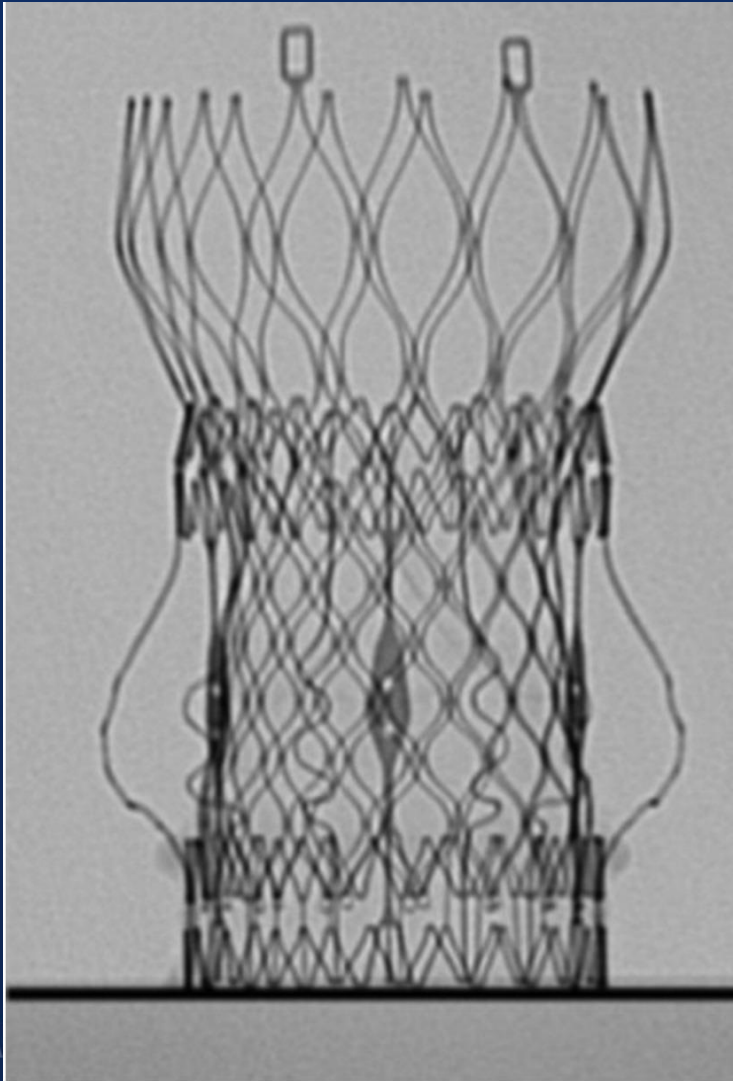
THV Proper Positioning

For Evolut valves, it is perhaps more important to align the lowest borders of both valves.



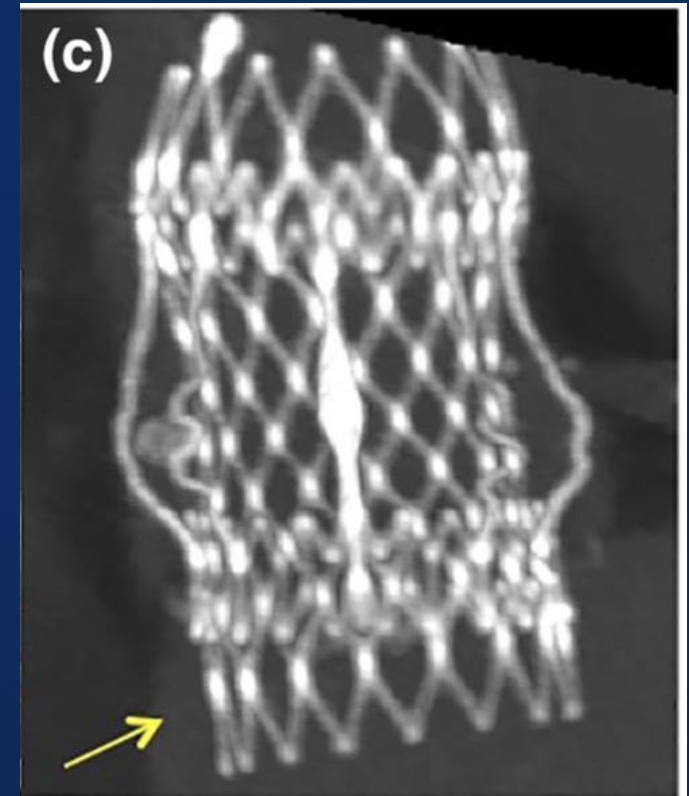
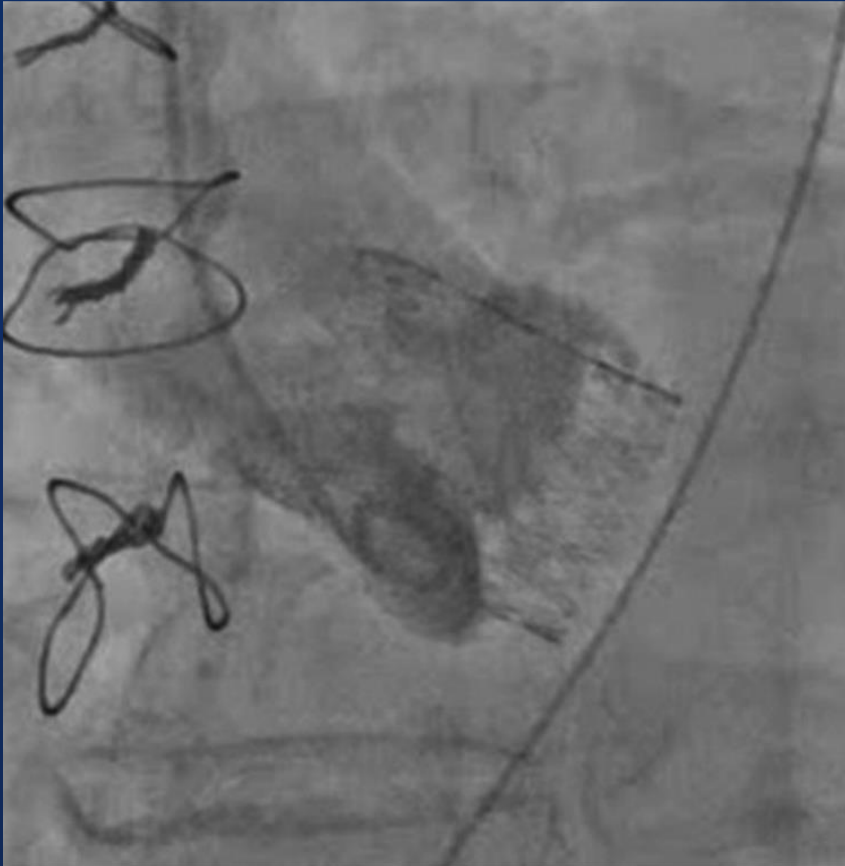
For Sapien 3, the outflow of the valve should be aligned before valve expansion with the superior column tapers of Perceval™.

Evolut Proper Positioning



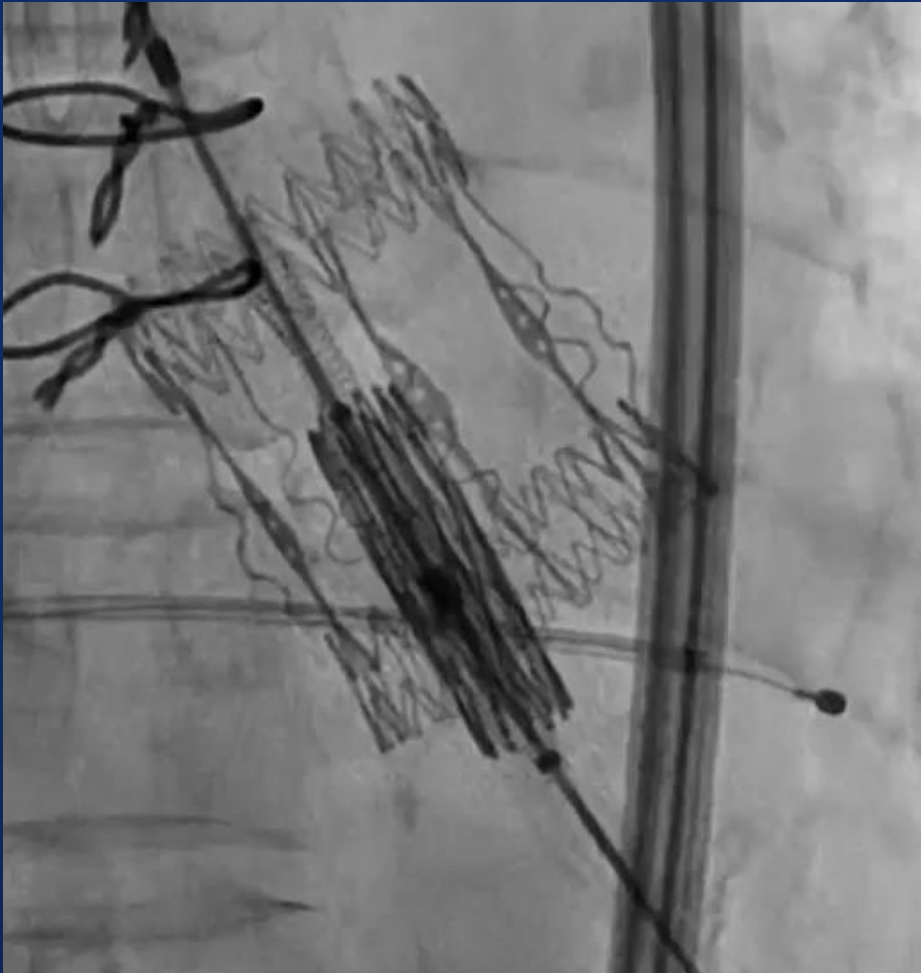
For the self-expanding valves, it is perhaps more important to align the lowest borders of both valves. Alignment of the bottom margins of the self-expanding (Evolut) valve and Perceval allows proper expansion of the flared outflow segment of the Evolut.

Evolut in Perceval; Too Deep



Positioning it too deep may result in the flared upper segment of the valve being constrained by the upper part of the Perceval stent frame.

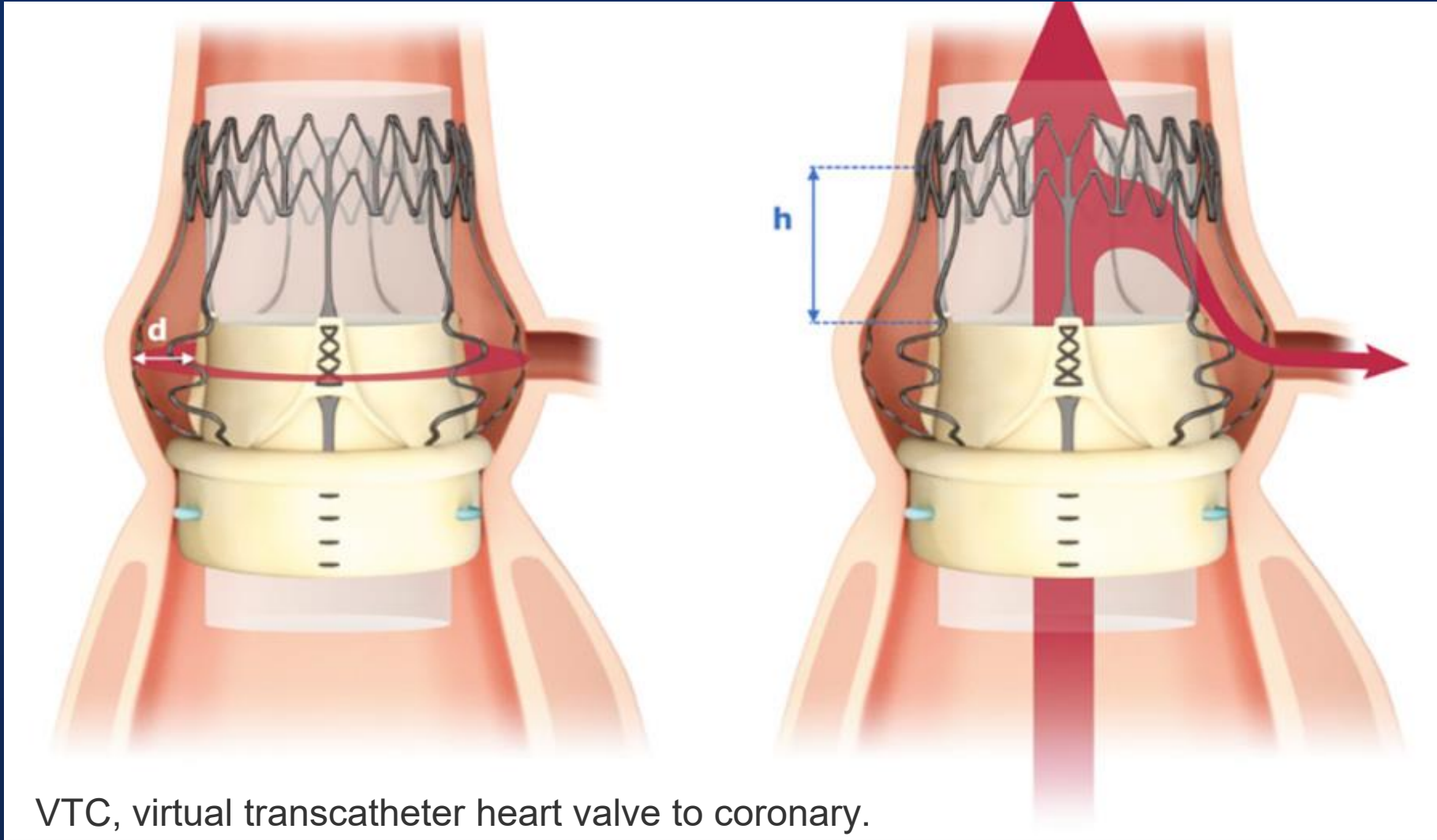
Sapien3U Proper Positioning



We now recommend aligning the S3 valve in the midpoint between the lower marker and the translucent line with the Perceval's bottom margin.

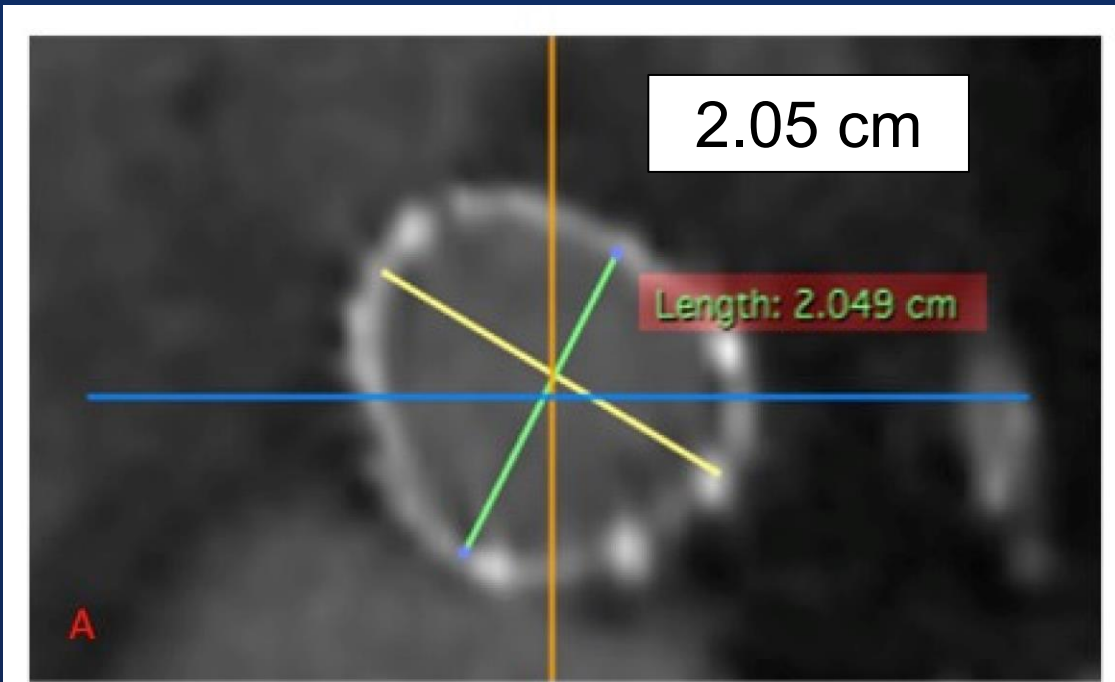
Risk of Coronary Obstruction

VTC

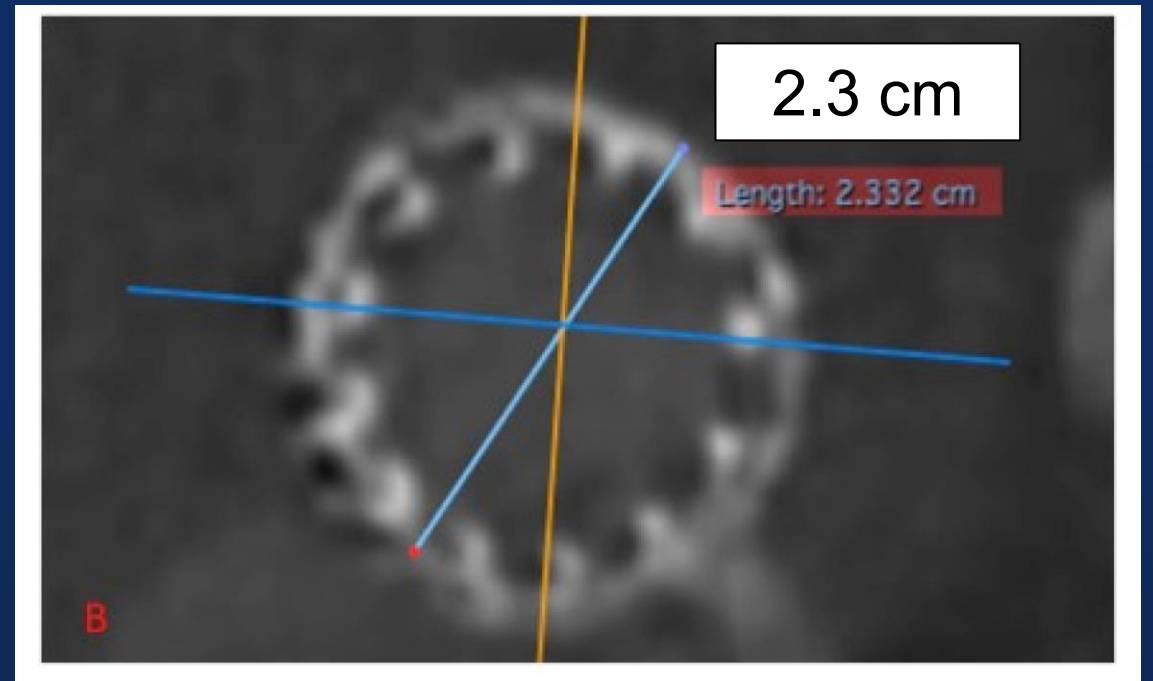


VTC, virtual transcatheter heart valve to coronary.

Overexpansion Capability

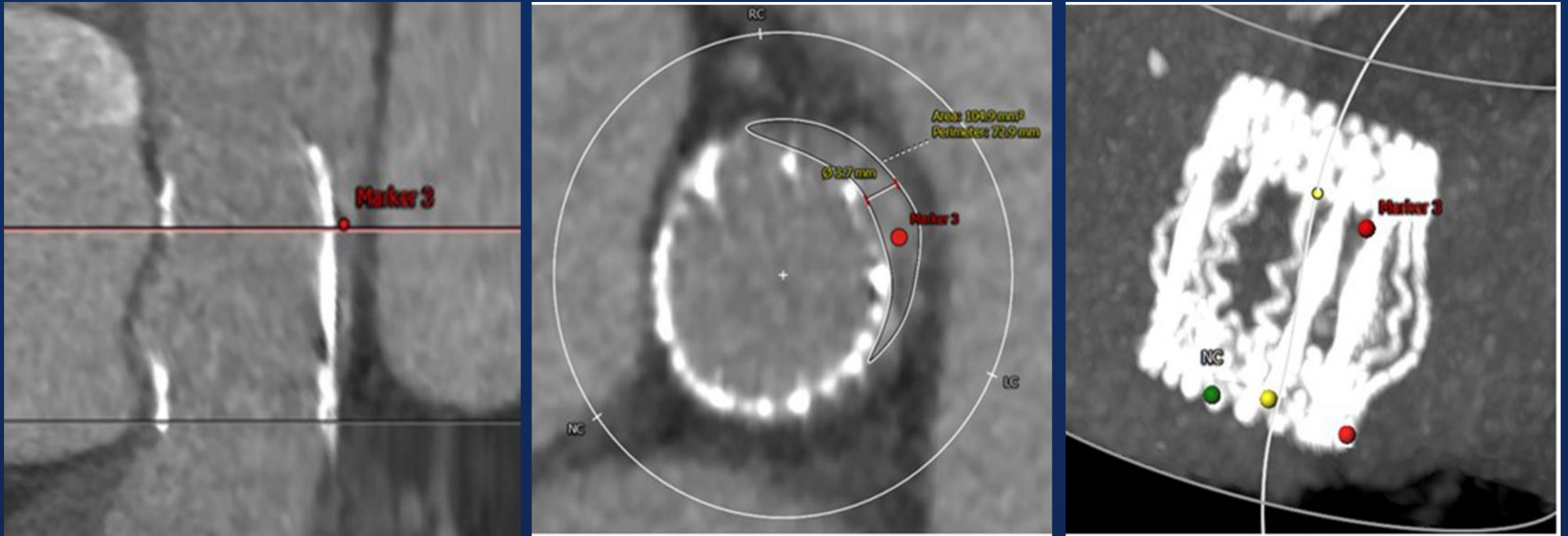


Preprocedural CT



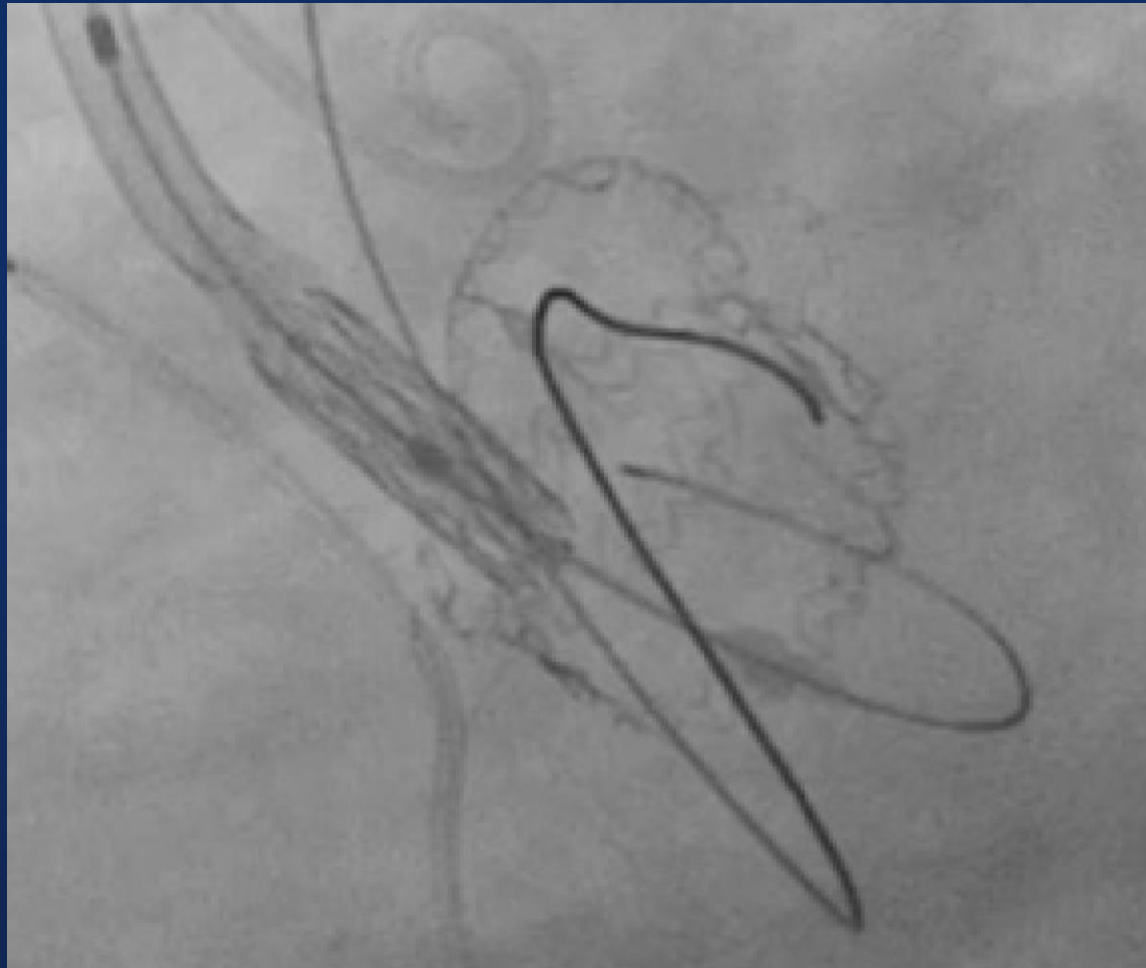
Post VIV-TAVIR CT

Possible for a catheter to pass behind the Perceval



Catheter may pass behind the stent frame

“fausse route” outside the stented frame



A case of wrong Perceval crossing outside the outflow ring